

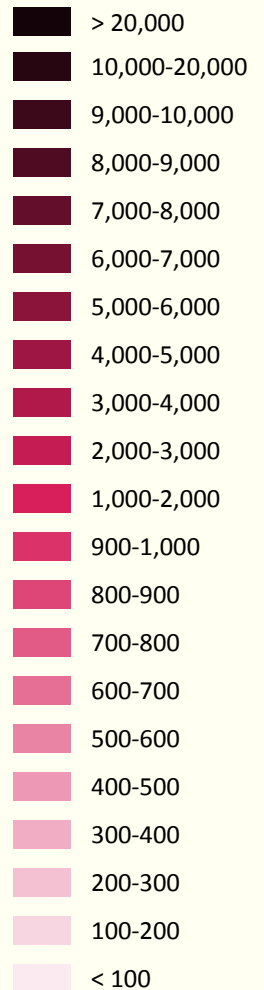
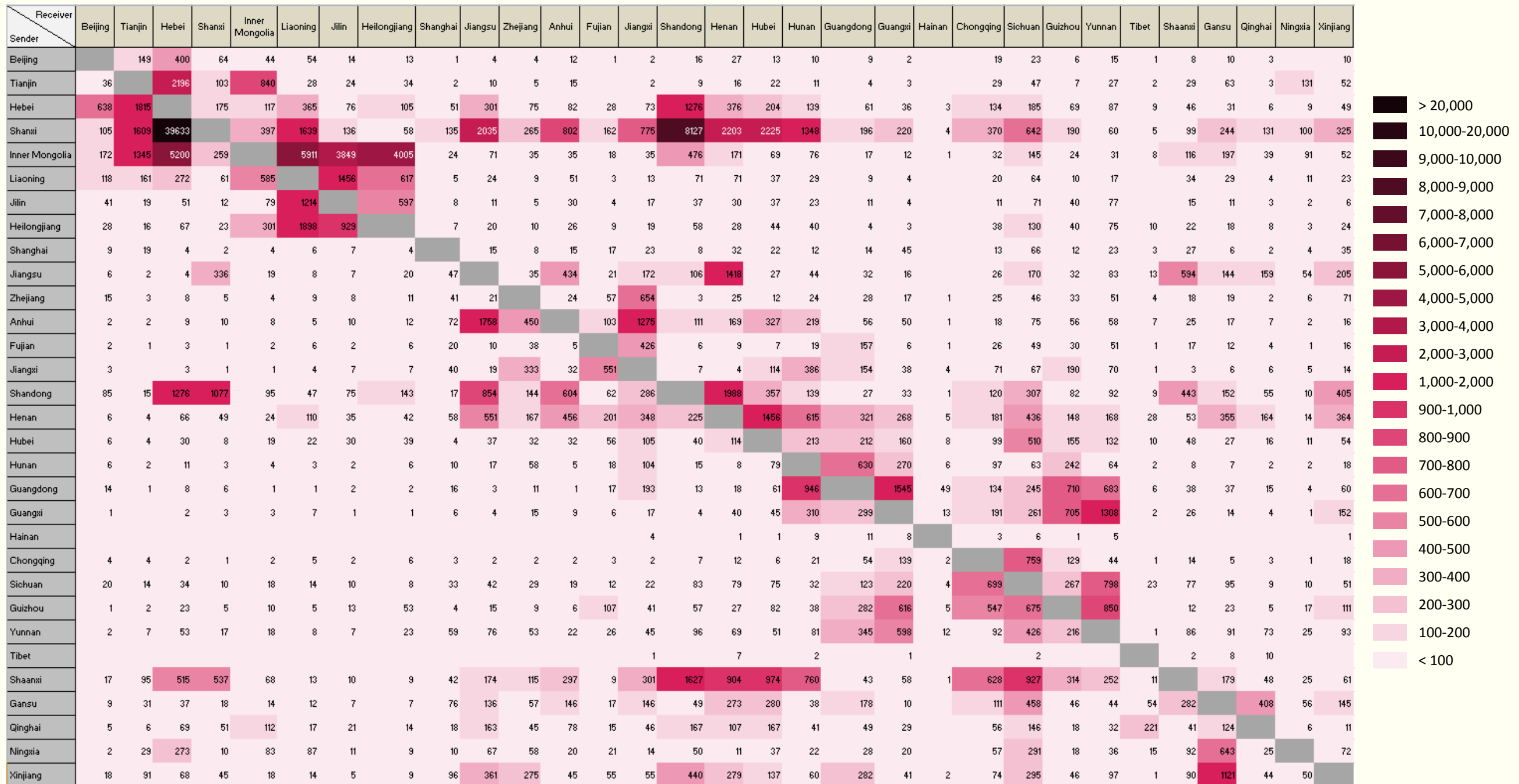
# China's transportation (2015) (III)

Business Policy and City Clusters in China  
April 2017



## Rail freight transport between China's provinces/municipalities (2015)

Unit: 10,000 tons



Data source: China Statistical Yearbook 2016

© Copyright 2017 Fung Business Intelligence All rights reserved.

Though the Fung Business Intelligence endeavours to have information presented in this document as accurate and updated as possible, it accepts no responsibility for any error, omission or misrepresentation. Fung Business Intelligence and/or its associates accept no responsibility for any direct, indirect or consequential loss that may arise from the use of information contained in this document.