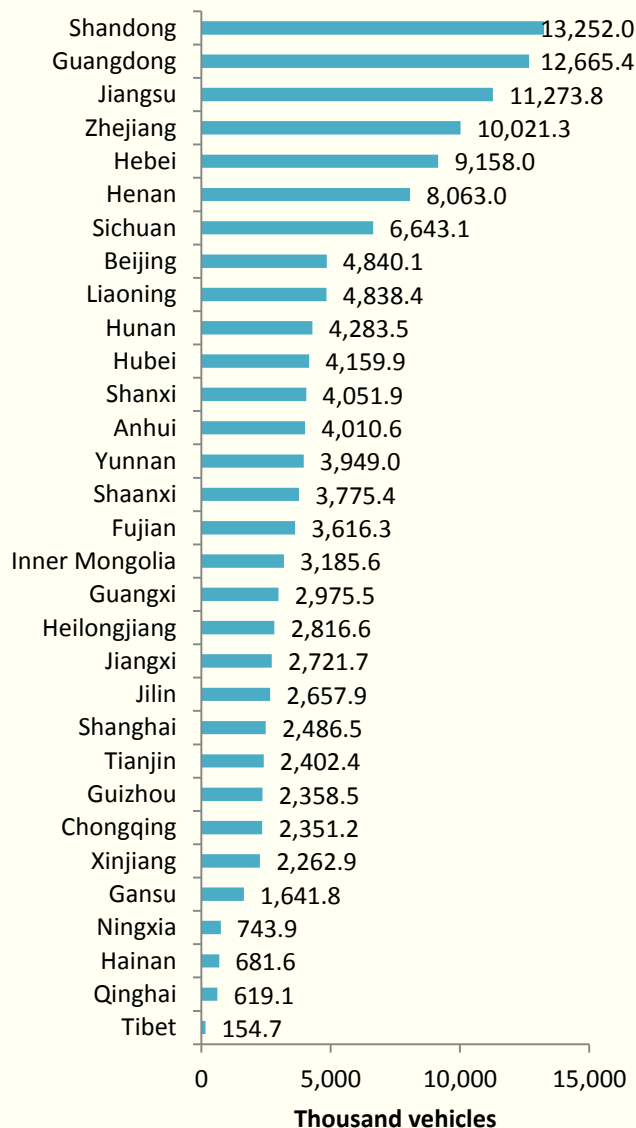


China's transportation and postal industry (2015) (II)

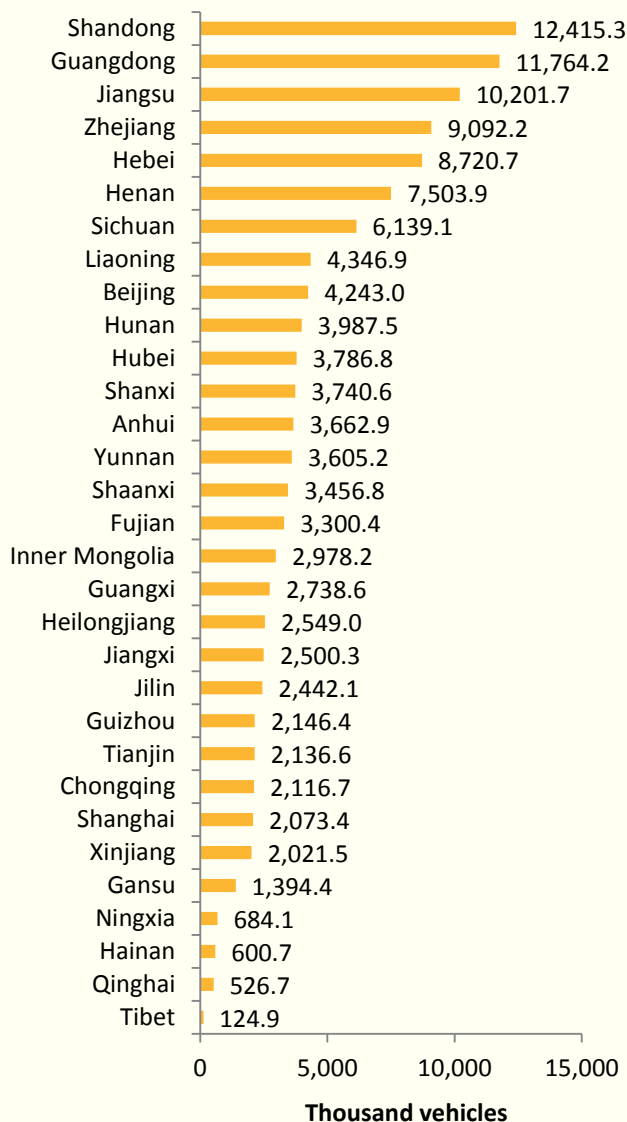
Business Policy and City Clusters in China
April 2017

FUNG BUSINESS INTELLIGENCE

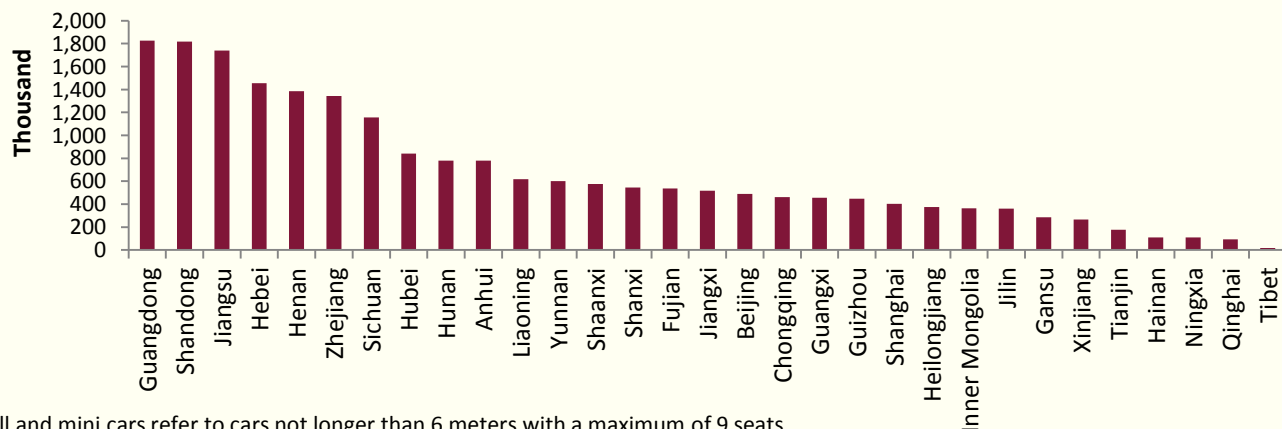
Possession of civil passenger vehicles (small and mini cars*) (2015)



Possession of private passenger vehicles (small and mini cars) (2015)



Newly registered civil passenger vehicles (small and mini cars) (2015)

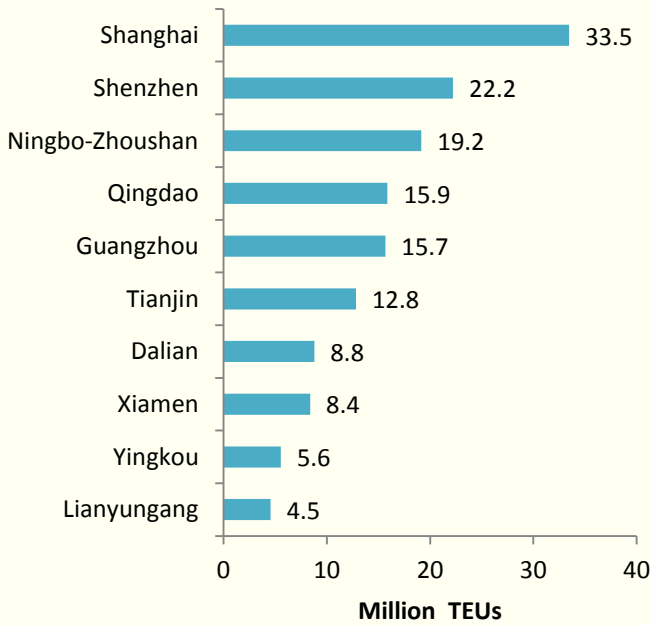


* Small and mini cars refer to cars not longer than 6 meters with a maximum of 9 seats.

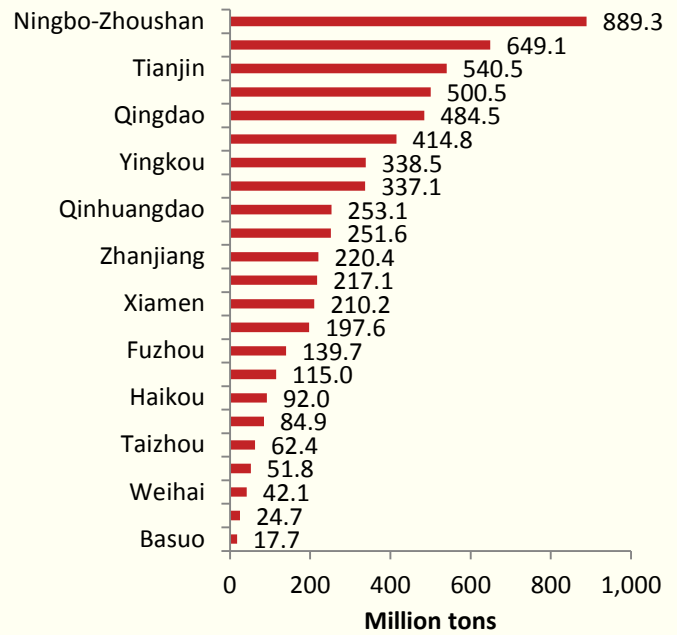
China's transportation and postal industry (2015) (II)

FUNG BUSINESS INTELLIGENCE

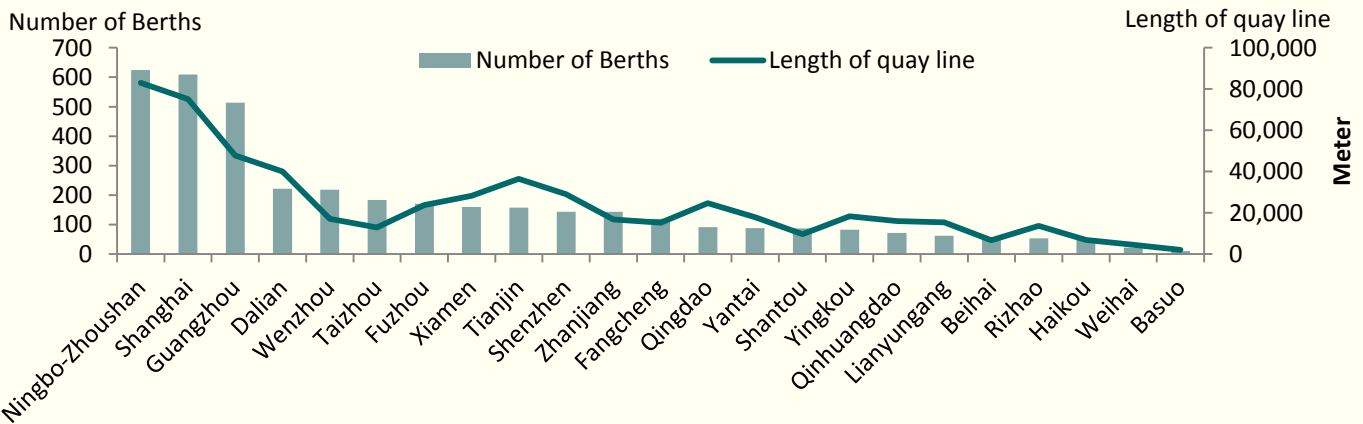
Container throughput of major coastal ports (2015)



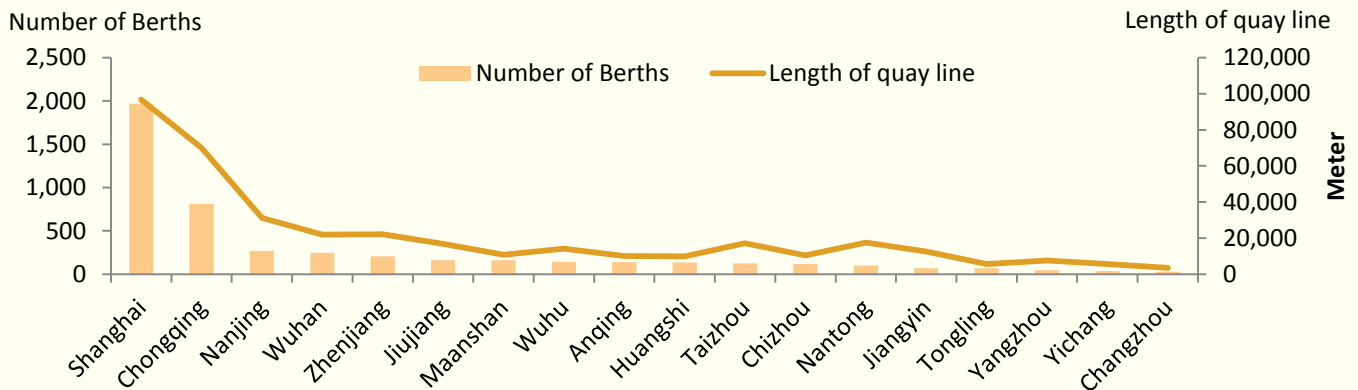
Tonnage of freight handled in major coastal ports (2015)



Number of berths for productive use in major coastal ports (2015)



Number of berths for productive use in major inland rivers ports (2015)



Data source: China Statistical Yearbook 2016

© Copyright 2017 Fung Business Intelligence All rights reserved.

Though the Fung Business Intelligence endeavours to have information presented in this document as accurate and updated as possible, it accepts no responsibility for any error, omission or misrepresentation. Fung Business Intelligence and/or its associates accept no responsibility for any direct, indirect or consequential loss that may arise from the use of information contained in this document.